



EIGEN INGENUITY



Product Information Sheet

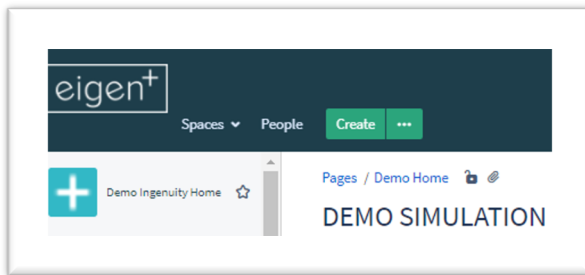
User Configurability

User Configurability

Engineers and Process Analysts can use Eigen Ingenuity to configure their own content displaying trends of data from multiple sources, KPI widgets, reference images & documents and many other elements.

This is made possible because Eigen Ingenuity is deployed on top of a wiki-type technology that allows for the easy creation of customised content without the need to program a single line of code.

Users can instantly create a new page by clicking on the “Create” button under the page and space where the new content is to be created.



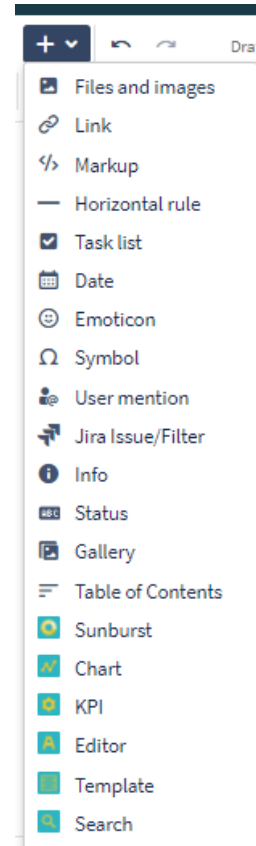
This will launch a brand-new blank page, which is like a canvass on which Eigen Ingenuity objects or typical wiki content such as text or attachments can be configured.

In what follows this info sheet will detail the different Eigen Ingenuity user configurable components.

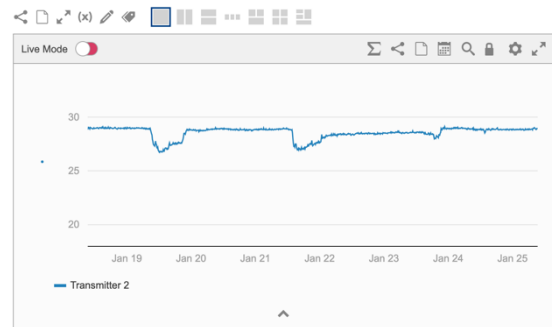
Trending Chart

Select from the “+” sign menu the “Chart” component and save the page. This will enable a blank trend chart onto which tags can be dragged and dropped from anywhere, markers for important events can be added and configured to look as required. For more information on Trending, see the Trending Product Information Sheet.

This is an advance yet easy-to-use trending tool for engineers with the following features:

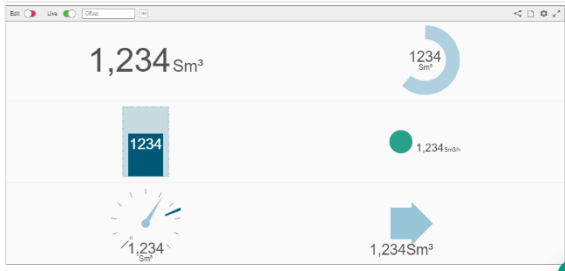


- Instant trending from anywhere
- Multiple Data Sources
- Horizontal, Vertical and Scatter plots
- Drag-and-drop interface
- Combine timeseries from multiple sources
- Different plot types
- Raw and Interpolated data
- Stepping and smoothing
- Grouping
- Axes and scaling
- Formatting the plot
- Quick layouts
- One-click to create a new page
- Adding titles
- Adding markers and limits
- Sharing



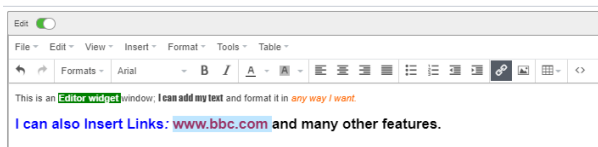
KPI

The KPI widget, allows the possibility to display a matrix of real time process variables or calculations as a large number, gauge, dial, level indicator, traffic light, arrow. The possibilities for user configurability are limitless, allowing the user to cater for their own dashboard visualisation requirements. See below a sample of various KPI widgets.



Text Editor

This widget allows for a practical manual text entry function in the page, avoiding the need to edit the entire page.



User Configured Alerts

Users can create custom alerts against any timeseries datasource in Eigen Ingenuity and receive email or push notifications (to their mobile app) whenever the status changes.

User limits are continuously scanned in the background and alerts are received almost instantaneously when the status changes.

A user defines an EventCheck as either a Min or Max check against a limit.



The tag name can be any timeseries source in Eigen Ingenuity, i.e. any real or virtual calculation (virtual timeseries).

Chattering alerts can be avoided by specifying a separate Recovery Threshold.

For more detailed technical information on User Alerts, refer to the Product Information Sheet.

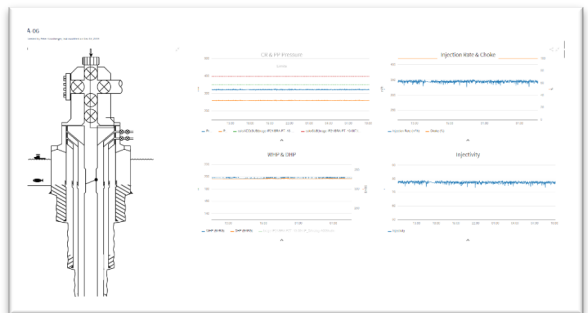
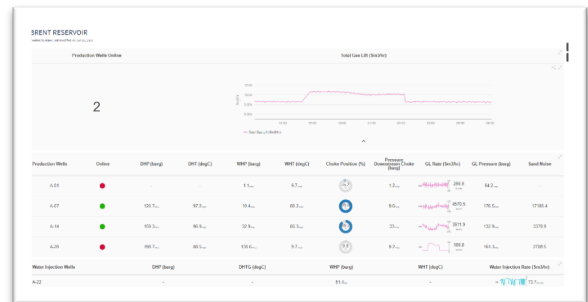
Advanced Features

The **Template** widget can be used to configure Digital Reports, to automatically generate multiple versions of a user configured page. The **Sunburst** Display is used to generate a Sunburst style visualisation. The **Search** widget is used to access the Asset Model or Digital Twin of Eigen Ingenuity.

These features can be used to access advanced features of Eigen Ingenuity, typically configured by Eigen Engineers.

Examples

Here are some examples of real User Configured pages.



For more information please contact us at info@eigen.co or book a demo on our website at www.eigen.co